

チーム横田の皆さん、

#### -ゲート入門の新しい手順について-

6月17日（水）から、ゲートに到着したら次の手順に従ってください：

1. マスク着用のこと
2. 自分が乗車している側の車窓を下すこと
3. IDカードを手に持って（バーコードのある側を）提示し、スキャンしてもらうこと
4. IDカードをひっくり返し、憲兵隊のガードに写真を確認してもらうこと

#### -ゲートの運用スケジュール-

ゲートは通常の運用時間に戻りました：

ターミナルおよびウェストゲート： 歩行者および車両共に常に24時間運用毎日

福生ゲート：車両は0600-2200；歩行者は0600-0100；毎日

サプライゲート：車両は0600-1800；歩行者は0600-2200；月-金

イーストゲート：車両は0500-0100；歩行者は0500-0100；毎日

これまで行っていたスクリーニングの質問は終了しました。日米地位協定が適用される人員または航空自衛隊員はどのゲートも使用可。

#### -保護対策-

2020年6月12日（金）に更新された公衆衛生非常事態における保護対策を引き続き順守すること。それらの対策は米国軍人、米国軍に勤務する米民間人、全扶養家族、退役軍人および退職した米民間人、接受国の従業員、契約業者および基地に出入りするその他の人間を含め（しかしこれらに限定されるものではない）、現在横田基地にいる、もしくは所属する全ての人員が守ることを義務付けています。

最新の保護対策に関しては、添付のイラスト早見ガイドを参照のこと。イラスト早見ガイドのローカルエリアマップも添付されています。

COVID-19のポリシーならびに保護対策については、引き続き横田基地公式ウェブサイト（Yokota website）、横田フェイスブック（Yokota Facebook page）および横田コネクトアプリ（Yokota Connect App）に更新情報を掲載します。

CURRENT AS OF JUNE 12, 2020

HPCON-B

# Off-Base Activity Guide

PROTECTIVE MEASURES FOR YOKOTA AIR BASE

## Members are now authorized travel within the local area

Downtown metropolitan Tokyo is NOT considered part of the local area.

### REMEMBER:

Health protective measures are still in place.



Wear masks off-base and when you can't maintain physical distancing



Wash your hands often, thoroughly, and for at least 20 seconds



Keep gatherings under 20 people



Maintain your daily contact tracing log



\*See notes below for travel details

### Prohibited Non-essential Services:

Crowds, close contact, or closed spaces where preventative measures can't be maintained are off-limits.



Bars/Breweries/  
Night Club/  
Karaoke  
To Include  
-Bar Row-



Indoor Game  
Centers/Pachinko  
Halls



Massage Services  
and Onsens/Public  
Baths



Tattoo/Piercing  
Parlors



Off-Base Fitness  
Facilities



Off-Base Beauty  
Salons/Barber  
Shops

\*Public transportation may be used to travel for employment, schooling, or daycare when private transportation is unavailable or impractical.

For all other activities, travel is only permitted by POV or private means.

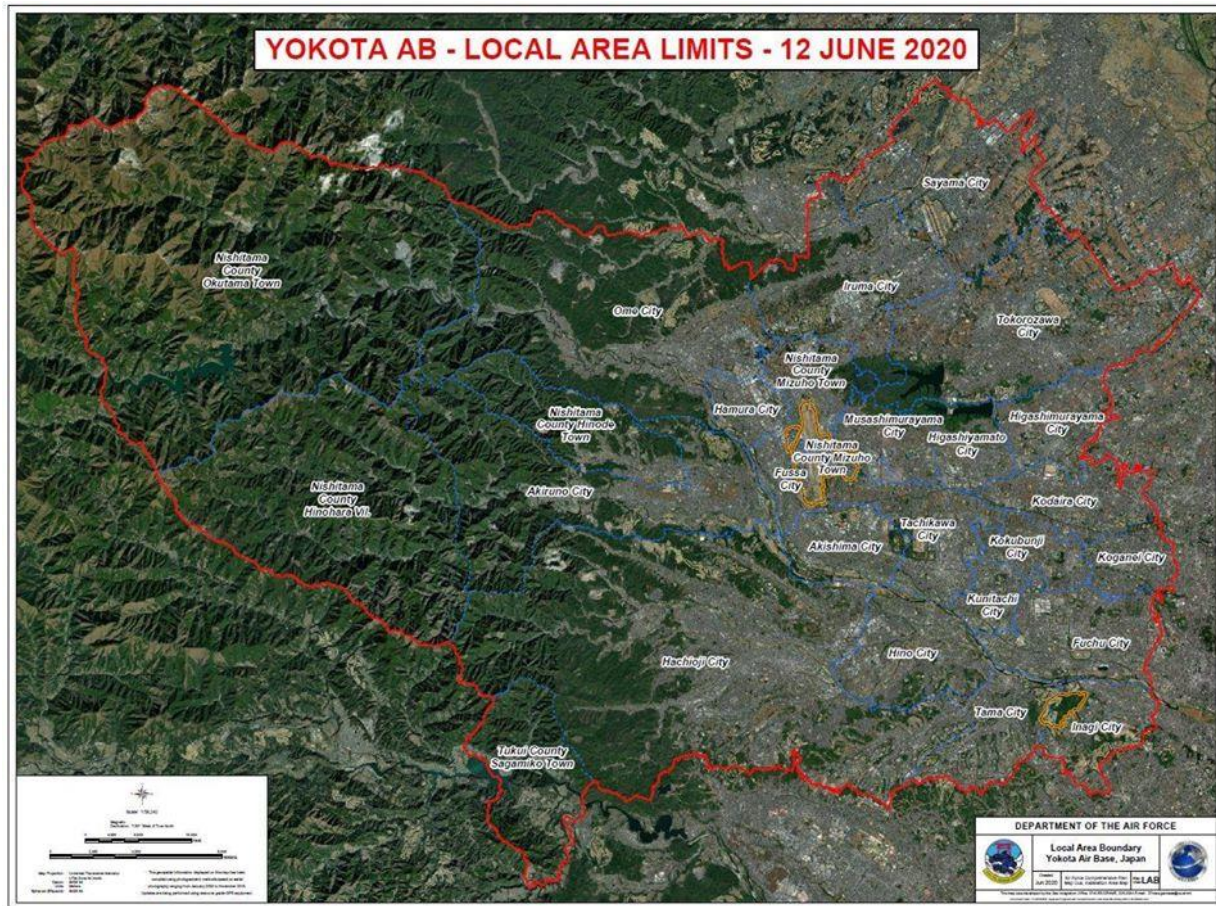
## Mission Essential Travel

Outside the local area  
includes but is not limited to:

- ➡ Off-base medical appointments
- ➡ Official duty at another U.S. military installation
- ➡ Necessary embassy visits
- ➡ Appointments with Japan government officials
- ➡ Off-base house hunting



For more information, visit:  
Yokota Air Base Facebook page  
Yokota Connect App  
Yokota.af.mil



Team Yokota,

#### -New Gate Procedures-

Starting Wednesday, 17 June, when arriving at the gate, please be sure to:

1. Have a face mask on
2. Have your window rolled down
3. Hold up your ID card to be scanned
4. Flip your ID to allow the Security Forces member to verify the picture

#### -Gate Schedule-

Gates have returned to normal operating hours:

- Terminal and West Gate: 24/7 for pedestrians and vehicles; Everyday
- Fussa Gate: Vehicles 0600-2200; Pedestrians 0600-0100; Everyday
- Supply Gate: Vehicles 0600-1800; Pedestrians 0600-2200; Monday-Friday
- East Gate: Vehicles 0500-0100; Pedestrians 0500-0100; Everyday

Please also note that all screening questions have ceased and personnel, SOFA or JASDF, may use any gate.

#### -Protective Measures-

Continue to observe all protective measures in accordance with the Public Health Emergency update published and distributed on Friday, 12 June 2020. Observance is mandatory for all personnel present on or assigned to Yokota Air Base including but not limited to U.S. military members, U.S. civilian

employees, all dependents, DoD retirees, Host-Nation (HN) employees, contractors, mission partner/tenant unit members and any other persons accessing the installation.

Please view to the attached graphic for a quick reference/guide on the most recent update to protective measures. The local area map referenced in the graphic is also attached.

The official Yokota website, the COVID-19 note on the Yokota Facebook page and the Yokota Connect App will continue to be updated for the latest information on policy and protective measures.

As a reminder, if you are experiencing COVID-19 symptoms (fever, cough, difficulty breathing), DO NOT go to Urgent Care. Call the medical appointment line at DSN: 225-8864 Opt. 7 or Cell: 042-552-2510 Ext. 58864 Opt. 7. DO NOT GO TO URGENT CARE IN-PERSON.